

CONNECTICUT RIVER VALLEY CHAPTER

NEWS

September 2012

WEBSITE ADDRESS: WWW.CRVC-EGA.ORG

Friday & Saturday, October 12th and 13th

"Ancestry" – Carolyn Standing Webb – A Foley/Cornelius Teacher

Technique: Blackwork

Class length: 2 days

Skill level: All

Project size: 11 inches by 7 inches

Kit cost: \$55.00

Kit contents: Linen, silk threads, gold thread, basing thread, needles, directions

Student supplies: colored pencils, usual stitching supplies, light and magnification , stretcher bars and tacks

***Pre-work: 6 to 8 hours

Schedule for Friday:

9AM to 12 noon

Class

12 to 1 PM

Lunch and show and tell (please bring a piece you are working on or have recently finished)

1 PM to 4 PM

Class

Schedule for Saturday:

9AM to 12 noon

Class

12 to 1 PM

Lunch and brief meeting

1 PM to 4 PM

Class

Location: Duncaster Senior Residence in Bloomfield, CT at **9 AM!**

Here are directions to Duncaster: (Official address is 40 Loeffler Rd, Bloomfield, CT)
(follow signs to the Aquatic Center)

From Rt. 84 Westbound [from Manchester]:

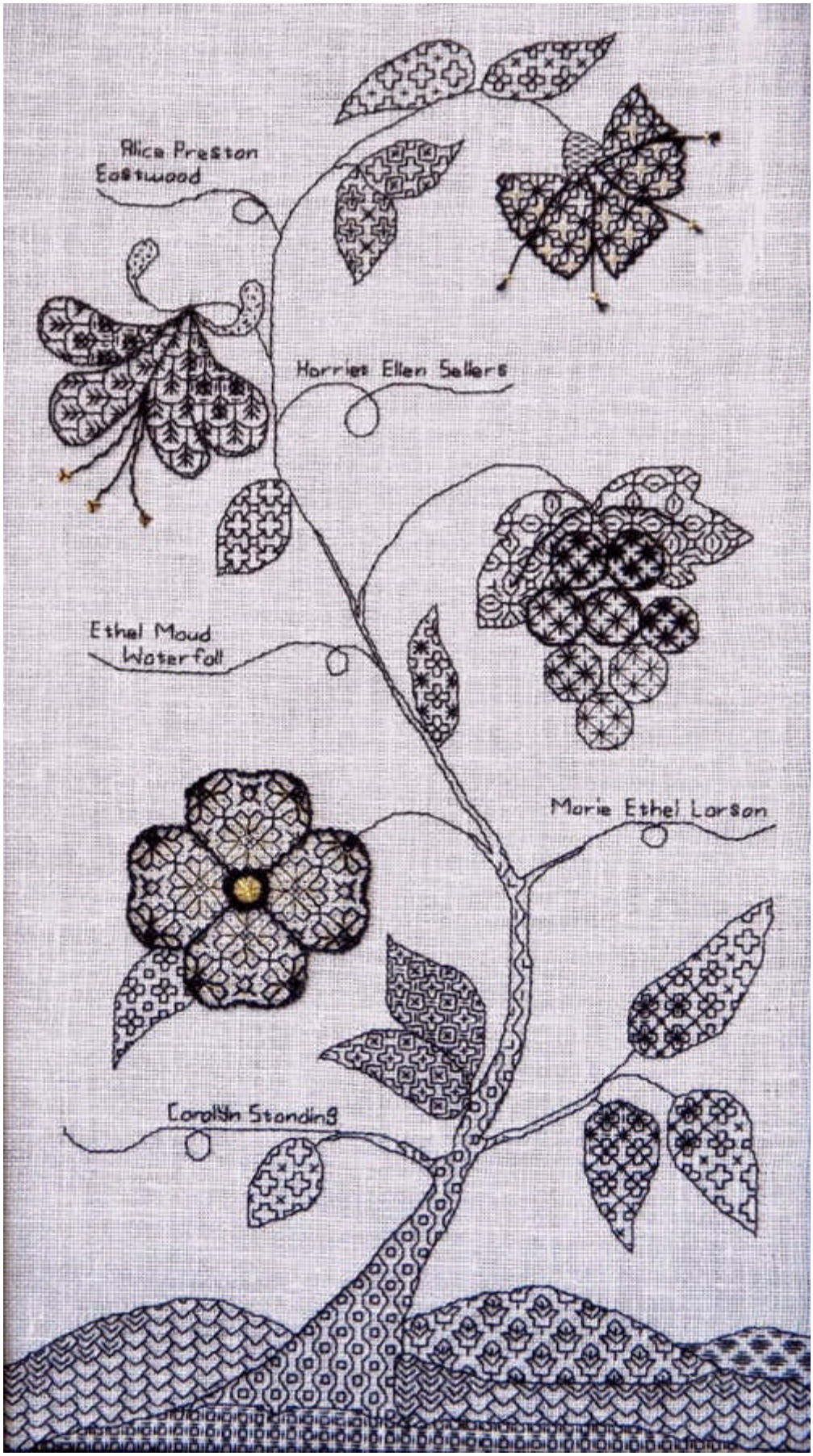
*Take Rt. 291, exit 61. Follow Rt. 291 to Rt. 218 exit. Take left onto Rt. 218. Follow for about 3 miles. Take right onto Rt. 189 and follow to the center of Bloomfield. Take a left on Rt. 178. Continue straight on Rt. 178 for 1.4 miles. To use the new front entrance, turn right onto Mountain Avenue and continue approx. ½ mile to entrance on the left into Duncaster. From the Loeffler Road entrance or the Mountain Avenue entrance, once on the campus, **visitors should follow the signs to the Aquatics & Fitness Center Entrance.** Our meeting takes place in the conference room one floor above the entrance level (4th floor).*

From Rt. 84 Eastbound [from Farmington]:

*Take exit 41. Go left on South Main Street [which becomes North Main Street at West Hartford Center] for 4.6 miles to Rt. 185. Turn left on Rt. 185 for 1.8 miles. Turn right on Rt. 178. To use the new front entrance, after about ½ mile turn left onto Mountain Avenue and continue approx. ½ mile to entrance on the left into Duncaster. From the Loeffler Road entrance or the Mountain Avenue entrance, once on the campus, **visitors should follow the signs to the Aquatics & Fitness Center Entrance.** Our meeting takes place in the conference room one floor above the entrance level (4th floor).*

From Rt. 91 [North or South]:

*Take exit 36. Go west on Rt. 178 for 4.5 miles to the center of Bloomfield. At the traffic light continue straight on Rt. 178 for 1.4 miles. To use new front entrance, turn right onto Mountain Avenue and continue approx. ½ mile to entrance on the left into Duncaster. From the Loeffler Road entrance or the Mountain Avenue entrance, once on the campus, **visitors should follow the signs to the Aquatics & Fitness Center Entrance.** Our meeting takes place in the conference room one floor above the entrance level (4th floor).*



Saturday, December 8th - Day 3

"Tree of Life" - Lynn Payette - A Foley/Cornelius Teacher

You will need to bring the following supplies to the class:

13" x 15" stretcher bars and tacks to mount the piece

Small, very sharp scissors; and small, sharp paper scissors

Invisible thread, and Beeswax - not Thread Heaven

Needles: #22 and #18 chenille, #5, #6, and/or #7 crewel/embroidery, #22 tapestry, beading needle; (bring several of each)

A few common pins

A piece of tracing paper

Pencils- 2 - (sharpened)

Glue-stick - not the blue or purple type

A 'C' clamp or other means of attaching the working frame to the table - optional but recommended

Extra lighting and magnification, if desired

A pillowcase or other cover for the work in progress

You may also wish to bring several small plastic bags (snack size) to place your threads in (and label)

Lots of enthusiasm for stitching a really fun and enjoyable piece!



Saturday, February 9th, 2013

This meeting will include the distribution of kits that have been ordered from Denise (see below) and the beginning of prework for the finishing class in June.

Saturday, April 13th, 2013

This Saturday we will continue stitching the Quaker Ball and answer any questions that may have arisen.

Saturday, June 1st, 2013

Quaker Ball Finishing Class with Denise Pratt – A Foley/Cornelius Teacher



Want to stitch something different and unique? Let's make a puzzle ball!

What is a puzzle ball? FUN! That's what it is. This particular ball uses octagons, hexagons, and squares.

It is based on one of the Archimedean solids. What is that?! It's a polyhedron of course, which is a geometric shape with flat sides. It's a geometry thing. But you don't need to know geometry to make this fabulous ball, because when you make the shapes out of fabric, sew them together, and stuff it, a ball is created instead of a polyhedron.

The stitches used on The Quaker Ball are cross stitch, running stitch, chain stitch, and lacing the chain.

Kits will be available several months prior to class. Students will stitch the individual components in the intervening months before class. In class, time will be devoted to constructing the puzzle ball. Some time may also be devoted to constructing bonus pieces for those students that have opted to stitch those pieces as well.

These balls use quite large pieces of linen. Instructions include fabric maps that show how to place the components on the linen, so as not to run short of fabric. Instruction book is 30 pages. Bonus accessory pieces are included in the book. An additional kit for accessory pieces is available.

Kit cost: There are several options for this piece.

- **Option A:** Booklet only – Student supplies all materials – \$28.00
- **Option B:** Small Ball Kit – 40 count Newcastle linen in flax, and Waterlilies Chili – \$62.00 (includes instruction booklet)
- **Option C:** Medium Ball Kit – 32 count Wichelt Natural Brown linen and a plethora of Weeks Dye Works floss – \$78.00 (includes instruction booklet)
- **Option D:** Large Ball Kit – 28 count Cashel Linen in flax, dark olive, and navy with three colors of Waterlilies silk thread – \$91.00 (includes instruction booklet)

Pre-work: Yes. Ball Components must be stitched in advance. Approximately 50 hours of stitching

Students need to bring to class: Scissors, magnification and lighting if desired

IMPORTANT: Students will supply the usual stitching supplies and cotton stuffing. Cotton stuffing can be purchased at quilt shops. It works better than polyester fiberfill. Polyester fiberfill makes the ball more lumpy. The cotton stuffing alleviates this problem.

Bonus Accessory Pieces Kit

A kit for the bonus accessories is also available. Finishing of these pieces can be included in class as time allows.

Kit includes the following:

Fabric: 13½” x 21” piece of your choice of either 32 count Wichelt Natural Brown Linen or 32 count Belfast Flax.

Floss: Hand-dyed floss from Weeks Dye Works 5 yd skein in the following colors; #1232 Palomino, #1268 Molasses - 2 skeins (for cording), #1285 Twilight, #1316 Mulberry - 2 skeins, #1331 Brick, #2158 Juniper, #2201 Moss, #2238 Sweet Potato.

Miscellaneous: Needle - #26 Tapestry, Heavy Duty Template Plastic for ornament and scissors book (6 1/2” x 9”), Matboard for pinkeep (2 1/2” x 6”), Wool felt for inside pinkeep (2 1/2” x 2 1/2”), Warm & White cotton batting for ornament, pinkeep, and scissors book (6 1/2” x 9”), Felted wool fabric for needle page in scissors book, in off white or tan (3 1/2” x 3 1/2”).

Note: Instructions are included in The Quaker Ball book purchased for class.

Accessory Kit Cost: \$40.00

The deadline for signing up for this class is December 8th. A [coupon for registration](#) is at the end of this newsletter.

NER Correspondence Courses



NER will be sponsoring three Group Correspondence Courses per year. Registration will be approximately every four months.

NER is paying all registration fees associated with the class. Each student pays only the cost of the instruction booklet and supplies, plus \$5.00 towards the postage costs.

Our current offerings are:

Spring Splendor, taught by Kay Stanis, registration ends November 1, 2012; the cost of this class is \$35.00, which includes the \$30 text fee and the \$5.00 postage fee. You will receive an instruction booklet with more than 50 pages, all of which are printed in color. You are responsible for providing all other supplies, with an estimated cost of \$72.00. You may buy them at your local shop or directly from the teacher. The text will include the information for ordering from the teacher.

My Favorite Bracelet, taught by Jeanette Carmichael, registration ends November 1, 2012; the cost of this class is \$41.00, which includes the \$36 text fee and the \$5.00 postage fee. You will receive a 55-page spiral bound instruction booklet with a color photo. You are responsible for providing all other supplies, with an estimated cost of \$55 to \$75, depending on your choice of beads and whether or not you're able to share supplies with other students.

Booklets will be received by the group leader approximately 8 to 10 weeks after the close of registration.

***Spring Splendor* (Teacher: Kay Stanis)**

Finally, after that long cold winter and the long cold drizzle that melted the gray snow and rinsed the earth clean, comes the time of generous sun. Blossoms exuberantly play in the golden light and spring walks among us again. The foundation for this bouquet is Dupioni silk and the silk fibers used are soft twist silk and silk sewing thread. These combine pearl purl, check purl, Japanese Twist, Grecian twist, passing thread, Japanese golds, to create the butterfly, blossoms and leaves. The stitches included are vertical, radiating, horizontal, voided, and diagonal satin; Long and Short over padding and split stitch; normal and pattern couching. The students will also learn how to transfer their own patterns and twist flat silk. The focus of the class will be on couching, filling areas with purls, and blending long and short over padding.

Project: Framed picture

Size: 8" X 10" design on 13 1/2" X 18" silk foundation

Fabric: Dupioni silk

Threads: **Silk:** 5 skeins, soft twist silks: 4 values red, 1 gold; Silk sewing thread; **Metal threads:** #1 Pearl purl; #6 Bright check purl; #1 Gold, Sterling™, 07; #5 Passing thread; #5 Japanese Gold; #3 Japanese twist; Medium Grecian twist; #8 Braid, preferably Coronet Braid™

Colors: Sample: reds. Student choice

Proficiency level: Intermediate to Advanced

Prerequisites: Should have some experience with working with silk.

Time: 12 months, 6 working sessions

Text: \$30.00 over 50 pages, all color

Supplies (approximately): \$72.00; a kit is available from the teacher, ordering information will be included with the class booklet

=====

Spring Splendor Group Correspondence Course

Name: _____

Address: _____

Preferred Phone: _____

Email: _____

EGA Membership Number (required): _____

The registration deadline is November 1, 2012.

Please send this form along with a check in the amount of \$35.00 made payable to "NER EGA" to: Pat Timpanaro, 41 East Highland Avenue, Melrose, MA 02176.

=====

My Favorite Bracelet (Teacher: Jeanette Carmichael)

Resplendent with pearl, silver, and crystal beads, *My Favorite Bracelet* is the time-honored classic bracelet, at home with both casual and formal wear and easily paired with a pearl necklace and earrings. It is made to fit the student's wrist perfectly and is fastened with a sterling silver clasp. The student will learn about beads and bead finishes, the reinforced square stitch foundation upon which the embellishment beads are attached, and a technique for a looped raised platform atop the foundation providing a dimension of height to the bracelet. Other techniques include various types of bead attachments, the application of filler beads, silver bead caps and spacers, and anchor and pivot beads, and two very simple beading knots to end and begin new threads. The Color Choice Challenge allows for choice of beads in colors to coordinate with any wardrobe.

Project: Beaded bracelet

Size: Width: 1 3/8"; Height: 1/2"; Length: to fit wrist

Color: Pearl, silver, and crystal aurora borealis

Beads, etc.: Various seed and embellishment beads, thread, needles, beeswax, bead pad, and sharp embroidery scissors

Skill Level: Intermediate

Prerequisites: None

Time: Preliminary meeting plus three meetings suggested -- 3 months

Text: \$36.00 per student, 55 pages, spiral bound, color photo

Supplies (approximate): \$55.00 to \$75.00 depending on beads selected and the sharing of supplies

=====
My Favorite Bracelet Group Correspondence Course

Name: _____

Address: _____

Preferred Phone: _____

Email: _____

EGA Membership Number (required): _____

The registration deadline is November 1, 2012.

Please send this form along with a check in the amount of \$41.00 made payable to "**NER EGA**" to: Pat Timpanaro, 41 East Highland Avenue, Melrose, MA 02176. NER will be sponsoring three Group Correspondence Courses per year. Registration will be approximately every four months.

=====

The Mountain Laurel Stitchers would like to invite you to join as we host Susan O'Connor for a one-day retreat, *Loves Me Loves Me Not*. Susan is a long time member of the Country Bumpkin team having an editorial role for both *Australian Smocking and Embroidery* and *Inspirations* magazines. *Loves Me, Loves Me Not* is the perfect introduction to the wonderful technique of stumpwork, as it is quick and fun to work and introduces the student to both detached and raised techniques. Stitched with French silk threads onto silk fabric, *Loves Me!* will give you a taste of this highly addictive form of embroidery.

For more information and to see a picture of this piece, please visit our website:
www.MountainLaurelStitchers.weebly.com. Thank you.

Date: Saturday, October 27, 2012

Time: 9:00 – 4:00 pm

Location: Timeless Treasures by Maureen

288 Main Street, Suite 1

Branford, CT 06405



NER SEMINAR 2013 - APRIL 5-7

The Committee for Seminar 2013 continues to work hard towards providing you with an exciting and stimulating event.

We ask that you mark your calendars and prepare to share this wonderful weekend with old and new friends.

Plans are in the works for an extensive 'Shop Hop'. We are suggesting that you 'Shop' your way to Seminar and stop in a variety of Needlework related shops. Details and passes, along with directions will be included when you receive your seminar confirmation.

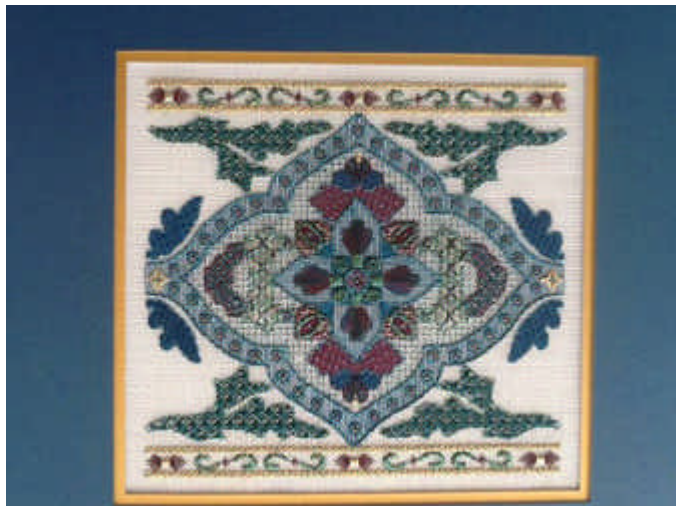
An Exhibit is being planned and each Chapter is being asked to showcase class or GCC projects completed within the past two years. This is your chance to share your work with other EGA members and help other Chapters who may be 'challenged' with ideas for programs.*

The Hartford/Windsor Marriott in Windsor, Ct. is the venue for our Seminar. It is within easy reach of an airport and also in close proximity to Hartford and New York City. Why not plan ahead and take in a show before or after your Seminar adventure! There are many area attractions which will keep spouses occupied while you are stitching!

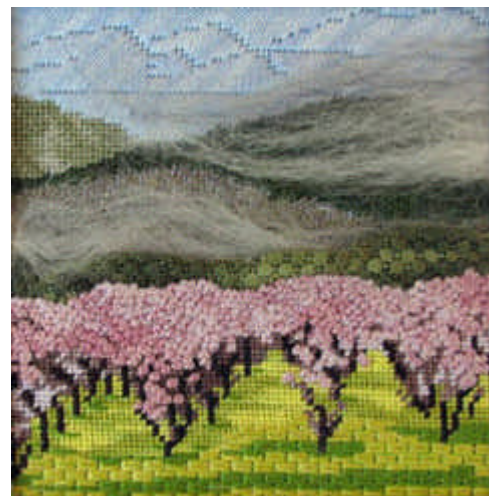
Don't forget, keep checking the NER web site, www.newenglandregionega.org
Information will be posted as it becomes available; or contact Julia at
juliaharvey0158@att.net

* There is no table rental fee for this event, and the space is secure with only seminar attendees admitted. Reservations will be taken in early 2013. Please contact Marjie Thompson (marjie@maine.rr.com) for questions or concerns.

AND NOW, The Faculty Chairs and Committee for Seminar 2013 are happy to share with you the following exciting selection of diversified teachers and classes which has been arranged for your pleasure: **ENJOY!!**



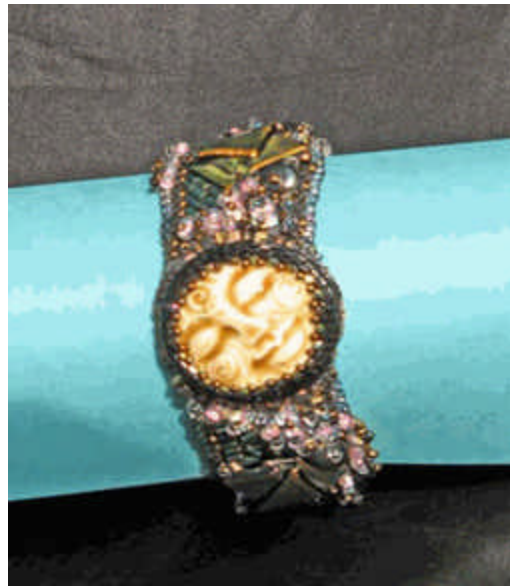
La Belle Joelle — Tony Minieri — canvas



Valley of Heart's Delight —
Lois Kershner — canvas



Serenity — Sylvia Murariu — Romanian point lace, beading, and surface embroidery



Mariner's Art — Marie Campbell — beading



Safe Haven — Judy Jeroy — silk embroidery



Ovals Rule — Diane Clements — reticello

FUTURE BOARD MEETINGS (All members are welcome)

Location: Thistle Needleworks at 10 a.m.

Tuesday, **November 13th** (please note this change)

Pequot Colony – Anyone who is interested can call Doris Boas at: (860) 572-8441 or Stephanie Thorp at: (860) 536-0912



*The Embroiderers' Guild of America
National Seminar October 5–11, 2013
Louisville, Kentucky*

EGA Seminar 2013 Early Registration

All EGA members are eligible for Early Registration for Seminar 2013.
The following is important information on the process and timeline.

- ❖ Seminar 2013 early registration will open on **November 3, 2012** for all EGA members. Class descriptions, photos, and the early registration form will be posted on the EGA website, www.egausa.org. Early registrations can be processed either on-line or by post.
 - ❖ Early registration for **Seminar 2012 attendees will open October 27, 2012**. Refer to the seminar participant handbook for location and hours.
 - ❖ Early registrations will be accepted for four-day and two-day classes (any combination up to six days of classes).
 - ❖ Early registration closes on **November 17, 2012**. Early registration forms must be postmarked by **November 17, 2012**.
 - ❖ Class descriptions and an early registration form may be requested on or before **October 4, 2012** via e-mail: EGA2013registrar@aol.com or by sending a #10 SASE with 2 first-class stamps to:

Mary Coyle
407 Philo Street
New Windsor, NY 12553
- The registrar will send the requested forms by **October 15, 2012**.
- ❖ The early registration form requires basic information: name, contact, and EGA membership number, **designation of 1st, 2nd, and 3rd class choices**, and payment of the \$100 (U.S. dollars) non-refundable fee.
 - ❖ **All early registrations** received at Seminar 2012 or processed on-line by **November 17, 2012**, or postmarked by **November 17, 2012** will be **considered equal**.
- ❖ Compilation of early registrations will occur after **November 17, 2012**. All over-subscribed classes will go to lottery.
 - ❖ Acknowledgement of early registration along with class assignment and credit card receipt (if applicable) will be sent to registrants by **December 17, 2012**.
 - ❖ Payment may be made by check, money order, or credit card (VISA or MasterCard).
 - ❖ To maintain early registration status, the balance of registration fees is due on or before **May 1, 2013**.
 - ❖ There will be a \$30.00 fee assessed for **each** change in class selection after **May 1, 2013**. Any changes made will forfeit early registration status.
 - ❖ Any outstanding balance due (e.g. kit fees, tour fee, adjustments, etc.) must be paid by **August 31, 2013**. If not paid by this date, the registrant loses his/her class assignment.
 - ❖ A notation will be made in the Seminar 2013 brochure and on the EGA website for filled classes.
 - ❖ All seminar cancellation policies are in full force and effect.

Judy Badger
jbadgerega@gmail.com
Chair EGA Seminar 2013

Mary Coyle
EGA2013registrar@aol.com
Registrar, EGA Seminar 2013

CRVC Program Registration Form -- for **June 1st Finishing class with Denise Pratt** at Duncaster.
Mail completed form to: Linda Berry, 343 Seabury Drive, Bloomfield, CT 06002. Make check
payable to **CRVC-EGA**. **The deadline for signing up for this meeting is December 8th.**

"Quaker Ball Finishing" - Denise Pratt

Check those that apply:

- _____ • **Option A:** Booklet only – Student supplies all materials – **\$28**
_____ • **Option B:** Small Ball Kit – 40 count Newcastle linen in flax, and Waterlilies Chili – **\$62**
(includes instruction booklet)
_____ • **Option C:** Medium Ball Kit – 32 count Wichelt Natural Brown linen and a plethora of
Weeks Dye Works floss – **\$78** (includes instruction booklet)
_____ • **Option D:** Large Ball Kit – 28 count Cashel Linen in flax, dark olive, and navy with
three colors of Waterlilies silk thread – **\$91** (includes instruction booklet)
_____ **Accessory Kit Cost: \$40.00**

_____ Lunch Saturday (February 9th) (\$12)

_____ Lunch Saturday (April 13th) (\$12)

_____ Lunch Saturday (June 1st) (\$12)

_____ Total

Name: _____

Phone: _____ Email: _____

CRVC-EGA Membership

\$55. Primary Membership
\$15. Plural Membership (NER)
\$18. Plural Membership (not
NER)

For a membership card, please
enclose a SASE.

Amt. Pd. _____

Check # _____

Date Pd. _____
(keep as your receipt)

CRVC-EGA Membership and Address Change Form

The membership year runs from June 1 to May 31. If you are joining after
September 1, please contact the membership chairman for prorated dues.

Mail your completed form to: Suzanne Newton, CRVC-EGA Membership,
14 Madison Lane, West Simsbury, CT 06092.

Make check payable to **CRVC-EGA**. Enclose SASE for membership card.

- ___ Address Change
___ CRVC Primary Membership (\$55)
___ Plural Membership, Primary Chapter in New England Region (\$15)
___ Plural Membership, Primary Chapter *not* in New England Region (\$18)

Name: _____

Address: _____

City, ST, ZIP _____

Phone: _____ Email: _____

Primary Chapter: _____

Membership No. _____ Total Enclosed \$ _____